



Key Positions of Loretto Feminist Network

Policy Positions

- Violence Against Women
- Health Care
- Immigration
- Economic Security, Wages, Housing
- Structural Inequality / Racism / Xenophobia
- Caring for the Earth

Violence against Women includes

- ▶ Physical, sexual, verbal, emotional, psychological abuse
- ▶ Threats, coercion
- ▶ Human Trafficking
- ▶ Occurs publicly or privately
- ▶ Female genital mutilation





Policy Position

We uphold the Trafficking Victims Protection Reauthorization Act of 2000 – reauthorized in 2019

3 Pronged Approach: **Prevention, Prosecution, Protection**

See <https://polarisproject.org/policy-and-legislation/>

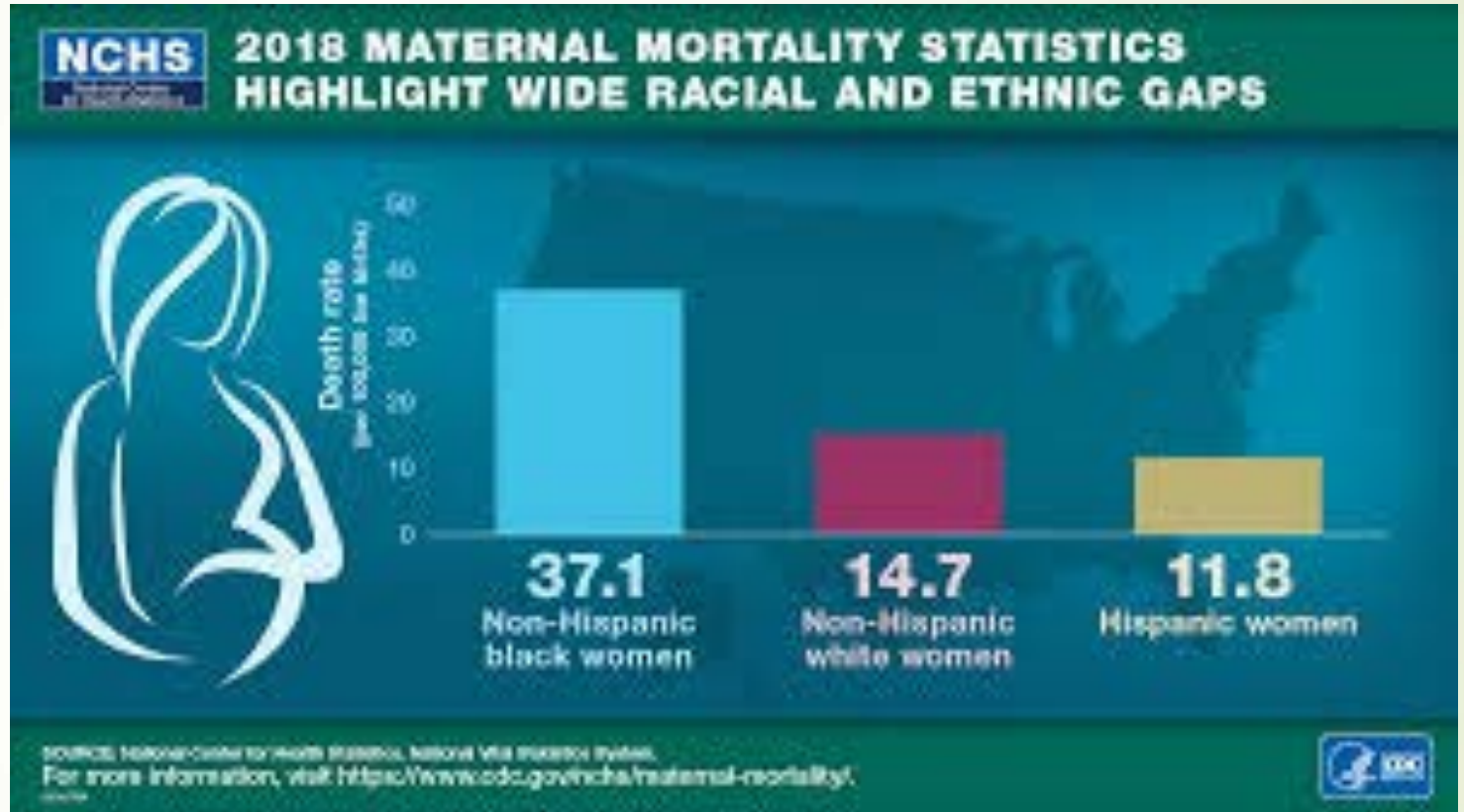


Health Care

- ▶ U.S. women report the least positive experiences with health care among the 11 countries studied. They have the greatest burden of chronic illness, highest rates of skipping needed health care because of cost, difficulty affording their health care, and are least satisfied with their care.
- ▶ <https://www.commonwealthfund.org/publications/issue-briefs/2018/dec/womens-health-us-compared-ten-other-countries>


Health Disparities

- ➔ The U.S. has the highest maternal mortality rate of any developed country





POLICY POSITION

- ▶ We support the Affordable Care Act and oppose cuts to and restrictions on Medicaid.
 - ▶ We recognize that all life is sacred. Equally sacred are the lives of those already born.
 - ▶ We support an increase in pregnant women's access to health care and nutrition.
- 



Immigration

- ▶ There are more than 23 female million immigrants in the United States today.
- ▶ They come from all over the world, although Mexico has the most immigrants in the US.
- ▶ <https://www.americanimmigrationcouncil.org/research/immigrant-women-and-girls-united-states>
- ▶ Picture: migrationpolicy.org

POLICY POSITION

- We oppose expanding the U.S. Mexico border wall.
- We support DACA protections and an immigration practice based on supporting a family unit.
- We support humane treatment at the border and by interior enforcement.
- We support immigrant families in the U.S. and the treatment with respect they deserve.
- We call for the observance of international law on asylum.



Economic Security

- ▶ Despite working full time throughout the year, 524,000 female-headed families (11.0 percent) lived in poverty in 2016

National Women's Law Center, 2017

Women continue to have higher rates of poverty than men. The 2018 poverty rate for women was 12.9%

<https://www.census.gov/library/stories/2019/09/payday-poverty-and-women.html>

POLICY POSITION


- ▶ We support family friendly policies workplace policies.
- ▶ We support families in the tax code.
- ▶ We support the raising of the minimum wage and protections of worker's rights to organize.
- ▶ We support a just tax code and to accurately measure and address poverty.

- ▶ We oppose all forms of discrimination, including racism, sexism, classism and heterosexism and endorse the Convention on Elimination of all forms of Discrimination Against Women (CEDAW).
- ▶ We oppose racism in all its forms and recognize that the past sins of racism are reflected in both our history and our current policies

Racism,
Structural
Inequality,
Xenophobia



Working for Peace

- ▶ Because most victims of war are non-combatants, mainly women and children, we strongly oppose war and militarism
 - ▶ We Act for Justice Work for Peace Banner
- 



Our Environment and Climate Change

- ▶ We support the Loretto Earth Network and its work to change policies and practices that harm the environment and women, particularly in developing countries.
- ▶ “The IPCC [International Panel on Climate Change] found that gender inequalities are further exaggerated by climate-related hazards, and they result in higher workloads for women, occupational hazards indoors and outdoors, psychological and emotional stress, and higher mortality compared to men,” Verona Collantes, an intergovernmental specialist with UN Women, told Global Citizen. <https://www.globalcitizen.org/en/content/how-climate-change-affects-women/>